

# PERED DRI PLANT

Complete Refractory Lining by Glauch Systems



**Glauch Systems<sup>°</sup>**  
REFRACTORY SOLUTIONS



## Furnace Lining

- LUPUDUR A 45e
- LUPUDUR FL 23 D
- LUPUTEC S 1500
- LUPUVIB S 1401





## Furnace Lining

- LUPUCAS 1100
- LUPUMAT 1400-128
- LUPUWOOL KP 1400
- LUPUFELT 1250-13
- LUPUSIL UL
- LUPUTHIN FX 1300





## Top Gas Duct Lining

- LUPUMAT 1260-96
- LUPUCAST S 1450 LC
- LUPUGUN S 1450



## Bustle Port Lining

- LUPUBLOCK T 1700 LC
- LUPUTEC S 1500
- LUPUSOL 1400-07-08
- LUPUCAS 1100
- Anchor



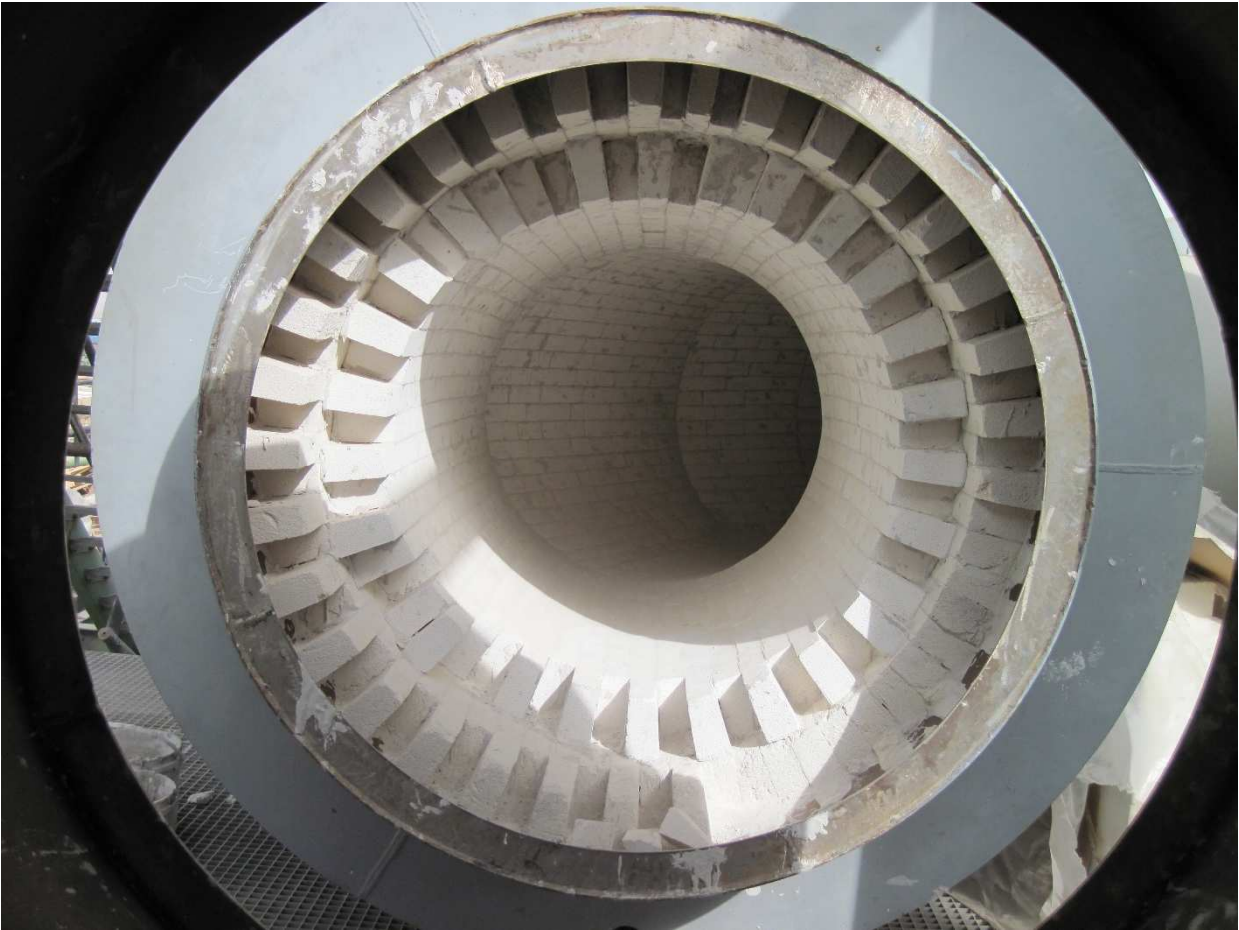






## **Bustle Gas Duct Lining**

- LUPUDUR FL 28
- LUPUDUR FL 23
- LUPUSOL S 1260-11 Li
- LUPUCAST S 1450 LC
- LUPUGUN S 1450
- LUPUMAT 1400-128
- Anchor







## Reformer Gas Duct Lining

- LUPUDUR FL 28
- LUPUDUR FL 25 L
- LUPUTEC FL 1400
- LUPUSOL 1400-15
- LUPUMAT 1400-128
- LUPUSOL S 1260-11 Li
- LUPUTHIN W 1600



## Reformer Gas Duct Lining

- LUPUMAT 1260-96
- LUPUBOARD 1260
- LUPUMOD 1260
- LUPUCAS 1100
- ANCHORS







## Reformer Box Lining

- LUPUDUR FL 28
- LUPUDUR FL 25 L
- LUPUTEC FL 1400
- LUPUSOL 1400-15
- LUPUMAT 1400-128
- LUPUSOL S 1260-11 Li
- LUPUTHIN W 1600
- LUPUMAT 1260-96
- LUPUBOARD 1260
- LUPUMOD 1260
- LUPUCAS 1100
- ANCHORS









## Flue Gas Ducts Lining

- LUPUDUR A 40e
- LUPUTEC T 1800
- LUPUTEC 1600-01
- LUPUCAST S 1601
- LUPUDUR FL 30
- LUPUDUR FL 28-09
- LUPUDUR FL 26
- LUPUDUR FL 25 L
- LUPUCAST S 1450 LC



## Flue Gas Ducts Lining

- LUPUDUR FL 23 D
- LUPUTEC FL 1400
- LUPUMAT 1400-128
- LUPUSOL S 1260-11 Li
- LUPUMAT 1260-  
LUPUGUN FL1260-11Li
- LUPUMAT 1260-96
- LUPUTEC FL 1200
- LUPUCAS 1100
- Anchors





## Heat recovery area Lining

- LUPUMAT 1400-128
- LUPUSOL 1300-13 IA
- LUPUMOD 1260
- LUPUMAT 1260-96
- LUPUWOOL 1260

## Heat recovery area Lining



- LUPUCAS 1100
- LUPUSIL FL
- Anchors







## Ejector Stack Lining

- LUPUDUR A 35t
- LUPUDUR FL 16 HD
- LUPUSOL IS 1150 L
- LUPUMAT BL 1260
- LUPUCAS 1000
- LUPUTEC A 6120
- Anchors



## **SHADEGAN STEEL PERED DRI PLANT**

- refractory bricks dense & insulating,
- pre fabricated shapes,
- mortars, castables,
- microporous, ceramic fibre
- calcium silicate products,
- anchors

**approx. 1.750 tons**



# **Glauch Systems°**

REFRACTORY SOLUTIONS

## **Glauch Systems GmbH**

Züchnerstr. 10 \* 56070 Koblenz \* GERMANY

Fon: +49 261 988197 0 \* Fax: +49 261 988 197 20 \*

Mail: [info@glauchsystems.com](mailto:info@glauchsystems.com) \*

web: [www.glauchsystems.com](http://www.glauchsystems.com)

## **Location Malaysia**

37-2 Jalan 23/70A

MY-50480 Kuala Lumpur

## **Location Brasil**

Rua Victor Konell, 201

Cep 89107-000

Pomerode

## **Location Slovenia**

Dolenje Mokro Polje 40

SI - 8310 ŠENTJERNEJ